



MOBILE AIR CHAIR

A new era in mobile pressure management

aspire for...

- Comfort
- Support
- Relief



World's leading high stretch, durable and breathable healthcare fabric

Integrated Postural Support

Adjustable Pressure Relief Seating

Generous Tilt and Recline for a "True Bed Feel"

www.aspirecare.com.au

1300 133 120



aspire | MOBILE AIR CHAIR

The Aspire Mobile Air Chair's unique design promotes skin immersion and envelopment. Pressure on the skin's surface is re-distributed, reducing the risk of pressure injury associated with prolonged sitting or lying.

Ideal for clinical and aged care environments, Genuine Dartex® Fabric Surface and our modular pressure relief system maximise comfort while integrated postural contours support optimal positioning.

The ergonomic and practical design make it safe and easy to manoeuvre and maintain.

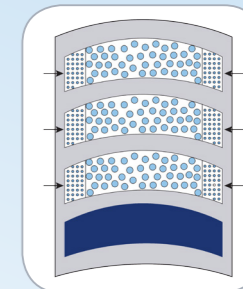


- ✓ DVA Contracted
- ✓ Mobile Air Chair is registered in the ARTG, AUST R ARTG 236829
- ✓ AS / NZS Approved



ADJUSTABLE FOAM MATRIX

A matrix of air flow chambers promotes skin microclimate and evenly redistributes pressure. A higher-density outer perimeter improves midline sitting, while foam cores are movable for customised positioning



PATIENT SURFACE - ADJUSTABLE PRESSURE

Contoured air bladder in the seating surface can be easily inflated and adjusted with integrated hand pump - stowed and concealed behind head wing when not in use



GAS ASSISTED TILT 25°, RECLINE 50° AND LEG RAISE 90°

Allows the chair to be easily transformed into a bed-like position, or set to manage posture, pressure and lower limb oedema



OPTIONAL ACCESSORIES

Tray Table **CHP198861**

Padded Footrest **CHP198860** (Pictured)



LOCKABLE CASTORS WITH DIRECTIONAL CONTROL

Front directional castor improves the ability to manoeuvre in a straight line through corridors, making it safer and lighter for attendant use



ERGONOMIC ATTENDANT GRIP HANDLES

Control levers for tilt & recline, push handle for attendant use



SWING AWAY BACKREST WINGS & ARMRESTS

Allows for easy patient side transfers



Frame



Fabric

CLINICAL CONSIDERATIONS

OPTIMAL POSITIONING AND POSTURE

- Gentle contouring in the sacral region assists the user in achieving and maintaining optimal positioning and a midline posture
- In the backrest, a higher-density foam outer perimeter improves midline sitting, while foam cores are movable for customised positioning needs
- Swing-away backrest wings and armrests decrease the demands on carers when transferring and positioning the user

positioning to facilitate fatigue management and relaxed positioning

OEDEMA MANAGEMENT

- The generous 90° leg raise angle assists with the management of lower limb oedema

SAFE HANDLING

- Ergonomic grip handles assist with leverage, while a directional locking castor makes manoeuvring in a straight line through long corridors easy and safe

REMOVABLE COVERS

- The cover is easily removed to facilitate laundering or replacement and for compliance

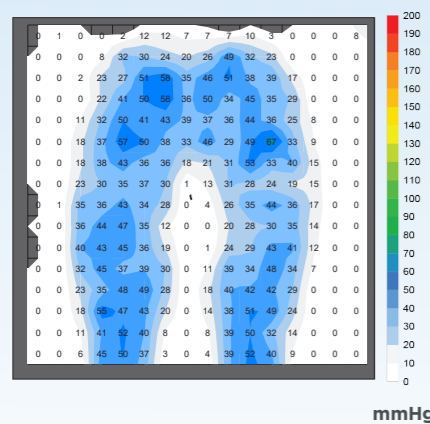
FATIGUE MANAGEMENT

- Integrated tilt, recline and leg raise allow the Aspire Mobile Air Chair to achieve bed-like

PRESSURE INJURY MANAGEMENT

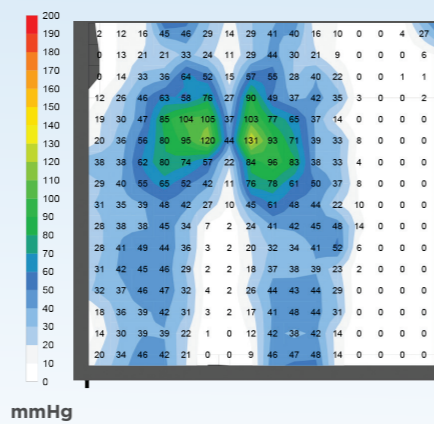
- Pressure injury management and prevention is the cornerstone of the Aspire Mobile Air Chair's design
- Figure 1.1 & 1.2 show the pressure mapping performance of the Aspire Mobile Air Chair vs another leading product (50kg Female mapped)

FIGURE 1.1 - ASPIRE MOBILE AIR CHAIR



High Pressure
Medium Pressure
No Pressure

FIGURE 1.2 - A LEADING PRODUCT



IMMERSION & ENVELOPMENT

- Lumbosacral contouring intelligently accommodates the gluteal shelf, allowing users to sit right back into the upholstery for improved positioning and immersion
- Designed with Dartex PU Fabric to maximise skin Immersion (Figure 1.3) and Envelopment (Figure 1.4) which is fundamental for a support surface to effectively redistribute pressure improving blood flow which promotes healing

FIGURE 1.3

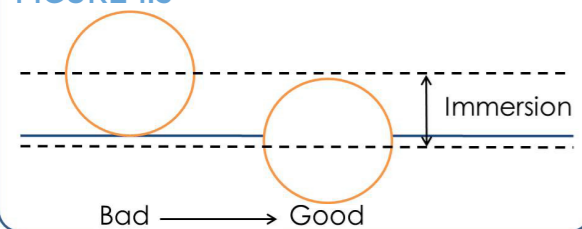
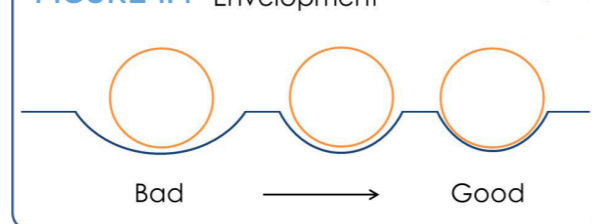


FIGURE 1.4 Envelopment

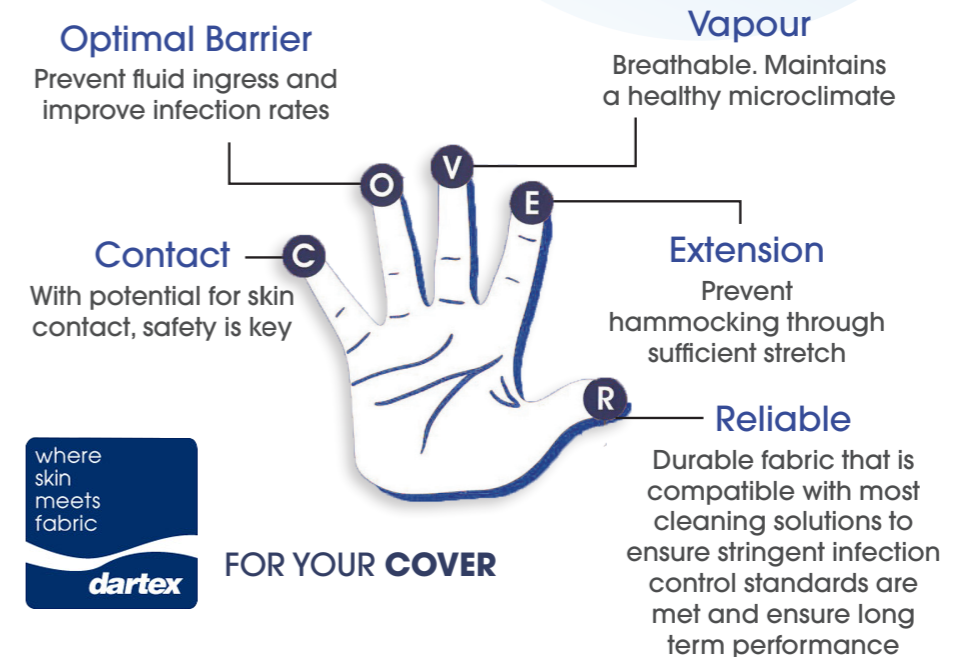


PATIENT SURFACE

GENUINE DARTEX® PU FABRIC

Well respected in the healthcare industry, Dartex® PU fabric is the perfect patient surface solution for treatment and management of pressure injuries through its 5 key characteristics (Figure 1.5).

FIGURE 1.5



PATIENT & CARER BENEFITS



Designed specifically for pressure care needs

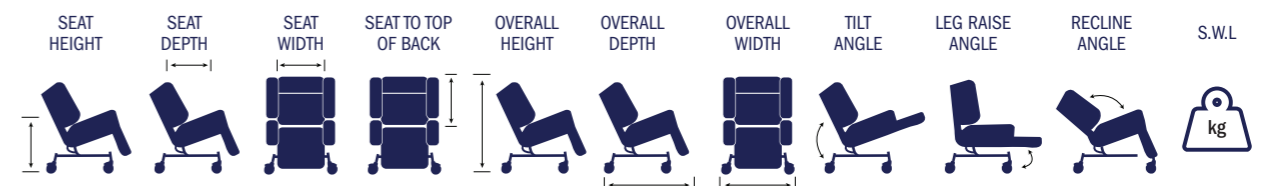


Removable anti-bacterial/anti-microbial cover for infection control management



Waterproof yet breathable for improved skin microclimate

TECHNICAL SPECIFICATIONS



| | SEAT HEIGHT | SEAT DEPTH | SEAT WIDTH | SEAT TO TOP OF BACK | OVERALL HEIGHT | OVERALL DEPTH | OVERALL WIDTH | TILT ANGLE | LEG RAISE ANGLE | RECLINE ANGLE | S.W.L |
|-----------------|-------------|------------|------------|---------------------|----------------|---------------|---------------|------------|-----------------|---------------|-------|
| CHP198850 Small | 650mm | 560mm | 410mm | 630mm | 1290mm | 690mm | 610mm | 25° | 90° | 50° | 180kg |
| CHP198855 Large | 650mm | 560mm | 500mm | 630mm | 1290mm | 690mm | 700mm | 25° | 90° | 50° | 180kg |

- * Chair measurements may vary +/- 20mm due to upholstery tolerances
- * Seat width is taken between the thickest sections of armrest padding
- * Full range of spare parts available

ASSOCIATED PRODUCTS



LIFTERS & SLINGS



TRANSFER AIDS



DAILY LIVING AIDS



AC BEDS



AIR LIFT CHAIRS



OVER TOILET AIDS



OVERBED TABLES



BED STICKS & POLES



FOAM MATTRESSES



AIR MATTRESSES



COMMODOES
URINALS & BED PANS



SIGNATURE CHAIR



SHOWER STOOLS & CHAIRS



RAISED TOILET SEATS



SHOWER COMMODOES



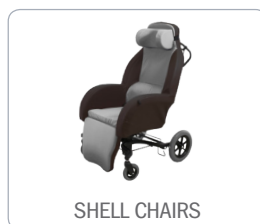
BATH BOARDS & BENCHES



DAY CHAIRS



WHEELCHAIRS

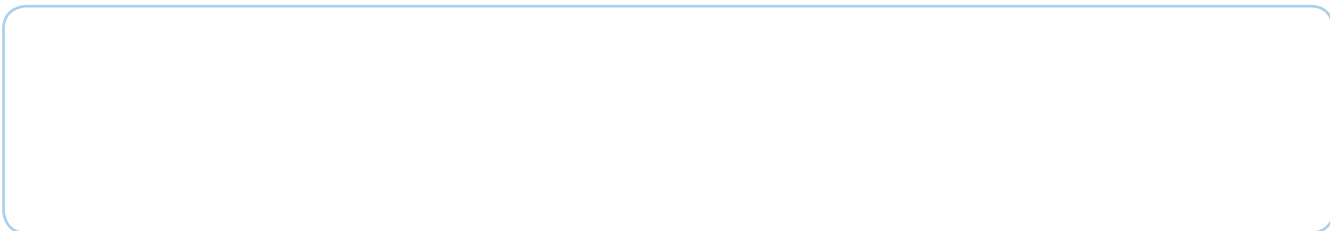


SHELL CHAIRS



PRESSURE CUSHIONS

Distributed by:



ASBR16.13 210117