

GuardON

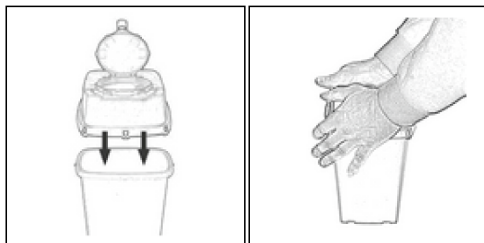
Instruction for Use

CS PLUS ECO Series

The CS PLUS series of sharps disposal container bases are made from 100% recycled materials, with an integral flap-style for both temporary and permanent closure, and a wide opening for the disposal of larger or odd-shaped material. An innovative hinged one-way flap allows easy single-handed disposal of sharps yet prevent the accidental outflow of contents.

The CS PLUS range includes containers from 3L to 22L; the larger sized containers are especially suitable for the disposal of cannulas and long needles. All CS PLUS ECO sharps disposal containers are certified compliant to sharps container standard ISO 23907-1:2019, on which the Australian/NZ standard AS/NZS 23907:2023 is based.

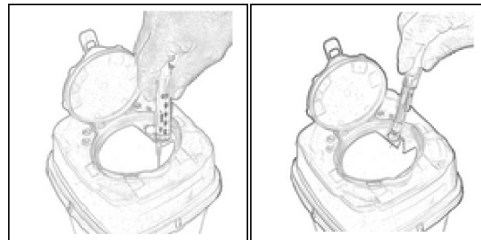
1. Attaching the lid



Place the opening of the lid above the label.

Press firmly on the opposite sides.

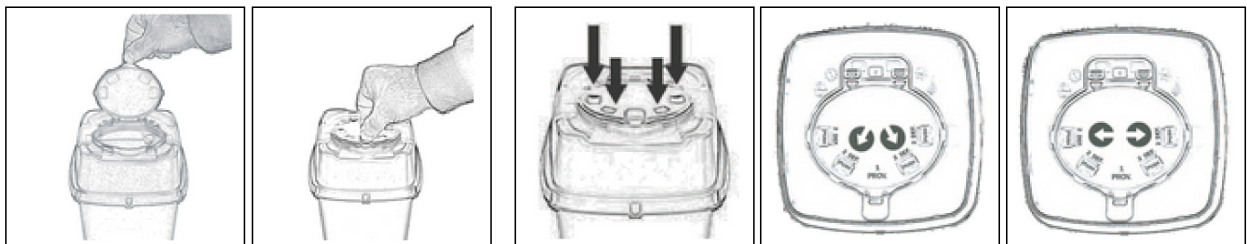
2. Needle removal



Needle removal: Use the 'V' notches to detach the needle from the syringe.

Needle removal for insulin pens: Insert into the 'daisy' notch and apply an upward motion to the pen (lever arm effect) before beginning to unscrew it.

3. Lid closure



Temporary closure: Lower the lid and push on PROV.

Permanent closure: Place the lid in temporary closure and press firmly on the two central "PUSH" or "DEF 1," followed by pushing on the two lateral "PUSH" or "DEF 2."



Do not exceed the designated fill level on these containers



The integrated handle at the top of the container can be used for ease of transportation

Disposal Method

Dispose in accordance with facility or local protocols

Caution:

- Do not place hands in bin
- Keep container upright
- Do not empty or re-use

GuardON

CS PLUS ECO Series

Technical Specifications

Disposable and unpierceable containers for sharp and pointed waste. The wide opening suits the disposal of every kind of material. The lid has a temporary and a permanent closure.

Material: Recycled polypropylene. During incineration containers release only water and carbon dioxide.

Users: all services where needles and sharps are used, laboratories, healthcare, other services.

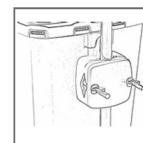
	CSP2LECO	CSP3LECO	CSP4LECO	CSP5LECO	CSP7LBECO	CSP10LECO	CSP22LECO
Capacity (L) Nominal Volume	2.00	3.00	4.00	5.00	7.00	10.00	22.00
Capacity (L) Real Volume	2.36	2.78	3.67	4.68	6.50	9.25	21.10
Capacity (L) Available Volume	2.00	2.31	3.06	3.90	5.30	7.81	17.80
Max Load Cap. (kg)	1.00	1.20	1.60	1.75	2.30	4.00	3.50
Weight (g)	240	265	313	356	430	594	1100
Dimensions (cm) H	20	23.7	24.8	30	40	32.5	34.5
Top (diam)	15.1 x 15.1	15.1 x 15.1	16.7 x 16.7	16.7 x 16.7	16.7 x 16.7	22 x 22	37.5 x 27.2
Base (diam)	11 x 11	10.4 x 10.4	11.5 x 11.5	12.6 x 12.6	12.6 x 12.6	17 x 17	30.5 x 21.5
# Units/Carton	62	60	52	40	28	33	10

Accessories - Brackets

Various models of brackets are available for different containers to be mounted on the wall.



CS PLUS ECO 2L-7L



CS PLUS ECO 10L-22L



Biological hazard

Complies with ISO 23907-1 standard, which provides guidance on selection and usage recommendations for this container type. Disposal should adhere to prevailing laws and regulations.