

# Nutrini Multi Fibre

A ready-to-use, nutritionally complete, fibre enriched, enteral tube feed for children 1-6 years (or 8-20kg)

## Features

- Whey protein enriched and dominant for improved tolerance and protein balance
- Higher proportion of fat, lower protein and iron content compared to adult formulations to cater for the needs of young children
- DHA\* dominant blend of long chain fatty acids to support brain function and prevent deficiency
- Fibre enriched, MF6 fibre blend\*\*\*, 4g per pack (500ml), to help maintain normal bowel function
- Enriched with carotenoids reflecting general health recommendations for its antioxidant properties and positive effect on immune function

## Indications

For the dietary management of:

- Disease related malnutrition in children 1 – 6 years (or 8 – 20kg)
- Growth failure
- Children with constipation or diarrhoea

## Important Notice

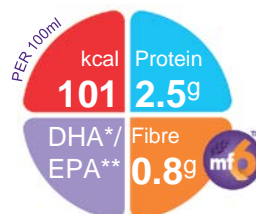
- Not suitable for patients with galactosaemia
- Not suitable for infants under 1 year of age
- Use with caution in children with a seafood allergy
- Use with caution in children aged 7 years and over
- Not suitable for children requiring a fibre free diet
- Not for parenteral use

## Directions for Use

- Use at room temperature
- Shake well before use
- Handle aseptically to ensure product remains sterile
- Usage to be determined by a healthcare professional

## Storage

- Store in a cool, dry place
- Once opened, store in the refrigerator
- Discard unused content after 12 hours



## Ordering Information

- To order contact Nutricia Customer Care 1800 889 480

Nutrini Multi Fibre	Code	Units per carton
200ml plastic bottle	83967	24
500ml pack	40783	8

## Ingredients

**Nutrini Multi Fibre:** Water, maltodextrin, vegetable oils (canola oil, sunflower oil), whey protein concentrate (from **milk**), sodium caseinate (from **milk**), dietary fibres (**soy** polysaccharides, resistant starch, inulin, arabic gum, cellulose, oligofructose), emulsifier (**soy** lecithin), **fish** oil, acidity regulator (citric acid), di potassium hydrogen phosphate, sodium chloride, tri calcium phosphate, potassium chloride, tri potassium citrate, calcium hydroxide, sodium L-ascorbate, choline chloride, carotenoids (contains **soy**) ( $\beta$ -carotene, lutein, lycopene), magnesium hydroxide, potassium hydroxide, taurine, ferrous lactate, zinc sulphate, L-carnitine, nicotinamide, DL- $\alpha$ -tocopheryl acetate, retinyl acetate, copper gluconate, sodium selenite, cholecalciferol, manganese sulphate, D-biotin, calcium D-pantothenate, thiamin hydrochloride, chromium chloride, riboflavin, pyridoxine hydrochloride, pteroylmonoglutamic acid, potassium iodide, sodium flouride, sodium molybdate, phytomenadione, cyanocobalamin.

\* Docosahexaenoic acid (DHA)

\*\* Eicosapentaenoic acid (EPA)



\*\*\*MF6 is a unique, patented blend of six soluble and insoluble fibres (soy polysaccharide, cellulose, resistant starch, gum arabic, oligofructose and inulin) reflecting the proportions of the different fibre types in a healthy diet.

A food for special medical purposes; to be used under strict medical supervision.

For more information call the  
Nutricia Clinical Care Line 1800 060 051

**NUTRICIA**  
Advanced Medical Nutrition

# Nutrini Multi Fibre

Nutrition Information		Per 100ml	Per 500ml
Energy	kcal	101	505
	kJ	425	2125
Protein	g	2.5 (10%E)	12.5
Casein	g	1	5
Whey	g	1.5	7.5
Carbohydrate	g	12.5 (49%E)	60
Sugars	g	0.8	4
as Lactose	g	<0.025	<0.125
Fat	g	4.4 (39.5%E)	22
Saturates	g	0.5	2
Monounsaturates	g	2.6	13
Polyunsaturates	g	1.3	6.5
DHA	mg	35.6	178
EPA	mg	8.6	43
$\omega 6 / \omega 3$ ratio		3.8:1	3.8:1
Fibre	g	0.8 (1.5%E)	4
Soluble:Insoluble		50:50	50:50
Water	ml	85	425

Minerals		Per 100ml	Per 500ml
Sodium	mg	60	300
	mmol	2.6	13
Potassium	mg	110	550
	mmol	2.8	14
Calcium	mg	60	300
Phosphorus	mg	50	250
Magnesium	mg	11	55
Chloride	mg	95	475
Ca:P ratio		1.2:1	1.2:1

Vitamins		Per 100ml	Per 500ml
Vitamin A	$\mu\text{g-RE}$	41	205
Vitamin D	$\mu\text{g}$	1	5
Vitamin E	$\text{mg-}\alpha\text{-T.E.}$	1.3	6.5
Vitamin K	$\mu\text{g}$	4	20
Vitamin C	mg	10	50
Thiamin	mg	0.15	0.75
Riboflavin	mg	0.16	0.8
Niacin	mg NE	1.1	5.5
Vitamin B6	mg	0.12	0.6
Vitamin B12	$\mu\text{g}$	0.25	1.25
Folic Acid	$\mu\text{g}$	15	75
Pantothenic Acid	mg	0.33	1.65
Biotin	$\mu\text{g}$	4	20

Trace Elements		Per 100ml	Per 500ml
Iron	mg	1	5
Zinc	mg	1	5
Manganese	mg	0.15	0.75
Copper	$\mu\text{g}$	81	405
Iodine	$\mu\text{g}$	10	50
Molybdenum	$\mu\text{g}$	4	20
Selenium	$\mu\text{g}$	3	15
Chromium	$\mu\text{g}$	3.5	17.5
Fluoride	mg	0.07	0.35



Other		Per 100ml	Per 500ml
Carotenoids	mg	0.1	0.5
Choline	mg	20	100
Carnitine	mg	2	10
Taurine	mg	7.5	37.5
Osmolality	mOsmol/kgH <sub>2</sub> O	240	240