



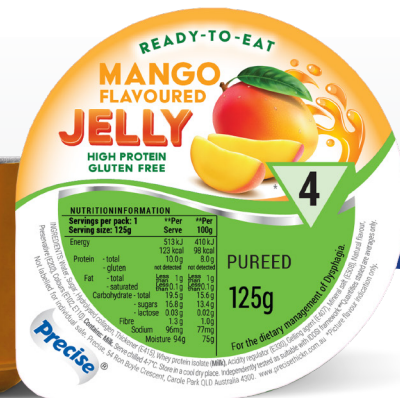
NEW

READY-TO-EAT

**MIXED BERRY
FLAVOURED**



**MANGO
FLAVOURED**



**EXCLUSIVE
PRECISE
PRODUCT**

Refreshing and creamy, our Ready-to-Eat Flavoured Jellies are innovative desserts packed with 10g of protein.

- ✔ **High protein (10g per serve)**
- ✔ **123kcal energy per serve**
- ✔ **125g serve**
- ✔ **Complete protein source**
- ✔ **Can be enjoyed chilled or at room temperature**

SUITABLE DIETS

- Dysphagia suitable (IDDSI Level 4 Pureed)
- Low lactose
- Gluten free
- Kosher suitable
- Halal certified



INGREDIENTS: Water, Sugar, Hydrolysed collagen, Thickener (E415), Whey protein isolate (Milk), Acidity regulator (E330), Gelling agent (E407), Mineral salt (E508), Natural flavour, Preservative (E202), Colours (E102, E110). **Contains: Milk.**

Made in Australia from at least 87% Australian ingredients

Australia Innovation Patent No. 2017101619

NUTRITION INFORMATION

Servings per package: 1 Serving Size: 125g

| | Average Quantity Per Serve | Average Quantity Per 100g |
|---------------|----------------------------|---------------------------|
| Energy | 513 kJ 123 kcal | 410 kJ 98 kcal |
| Protein | 10.0 g | 8.0 g |
| Fat | -gluten Not detected | Not detected |
| | -total Less than 1 g | Less than 1 g |
| | -saturated Less than 0.1 g | Less than 0.1 g |
| Carbohydrate | -total 19.5 g | 15.6 g |
| | -sugars 16.8 g | 13.4 g |
| | -lactose 0.03 g | 0.02 g |
| Dietary Fibre | 1.3 g | 1.0 g |
| Sodium | 96 mg | 77 mg |
| Moisture | 94 g | 75 g |

ORDERING INFORMATION:

| PRODUCT NAME | UNITS PER CASE | PRODUCT CODE |
|---|----------------|--------------|
| PRECISE L4 MANGO FLAVOURED JELLY PUREED | 24 x 125g | 50285 |
| PRECISE L4 MIXED BERRY FLAVOURED JELLY PUREED | 24 x 125g | 50385 |

#Information is for Mango Flavoured Jelly

SHELF LIFE: When stored as recommended, the product will have a shelf life of 9 months. Once opened, product should be handled and stored according to your sites' food safety protocols. Precise recommends the use of the '2 hour / 4 hour rule' for serving vulnerable persons, refrigeration between serving, and discarding any leftover product after 24 hours.

STORAGE INSTRUCTIONS: Storage in a cool, dry environment at ambient temperature (18-22°C) is recommended. Serve at 4 - 7°C.

CONTACT YOUR LOCAL PRECISE BUSINESS DEVELOPMENT MANAGERS FOR WHERE TO BUY